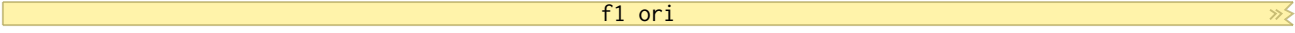


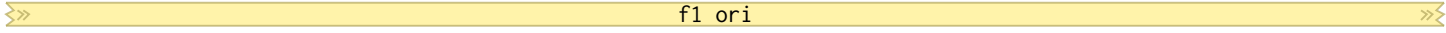
pET-28b(+) HTALT (5737 bp)

TGGCGAATGGGACGCGCCCTGTAGCGGCGCATTAAAGCGCGGCGGGTGTGGTGGTTACGCGCAGCGTGACCGCTACACTTGCCAGCGCCCTAGCGCCCGCTCCTTTCCG
ACCGCTTACCCTGCGCGGGACATCGCCGCGTAATTTCGCGCCGCCACACCACCAATGCGCGTGCCTACTGGCGATGTGAACGGTTCGCGGGATCGCGGGCGAGGAAAGC



10 20 30 40 50 60 70 80 90 100

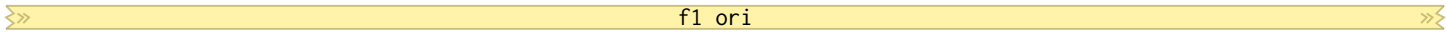
CTTTCTTCCCTTCTTTCTCGCCACGTTTCGCCGGCTTTCCCGTCAAGCTCTAAATCGGGGGCTCCCTTTAGGGTCCGATTTAGTGCTTACGGCACCTCGACCCC
GAAAGAAGGGAAGGAAAGAGCGGTGCAAGCGGCCGAAAGGGGACAGTTTCAGATTTAGCCCCGAGGGAAATCCCAAGGCTAAATCACGAAATGCCGTGGAGCTGGGG



110 120 130 140 150 160 170 180 190 200 210



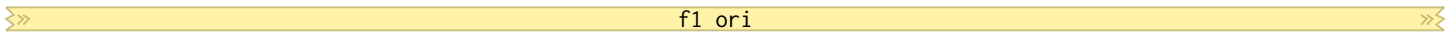
AAAAAAGTATTAGGGTGTGGTTCACGTAGTGGGCCATCGCCCTGATAGACGGTTTTTCGCCCTTTCGACGTTGGAGTCCACGTTCTTTAATAGTGGACTCTTGTT
TTTTTTGAACATAATCCCACTACCAAGTGCATCACCCGGTAGCGGGACTATCTGCCAAAAAGCGGAAACTGCAACCTCAGTGCAAGAAATATCACCTGAGAACA



220 230 240 250 260 270 280 290 300 310 320



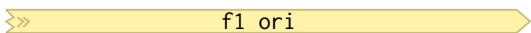
CCAAACTGGAACAACACTCAACCCTATCTCGGTCTATTCTTTGATTATAAGGGATTTTGCCGATTTTCGGCCTATTGGTTAAAAAATGAGCTGATTTAACAAAAAT
GGTTTGACCTTGTGTGAGTTGGATAGAGCCAGATAAGAAAACTAAATATTCCTAAAACGGCTAAAGCCGATAACCAATTTTTACTCGACTAAATTGTTTTTA



330 340 350 360 370 380 390 400 410 420



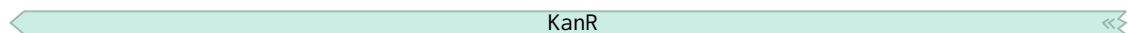
TTAACGCGAATTTTAAACAAAATATTAACGTTTACAATTTTCAGTGGCACTTTTCGGGAAATGTGCGCGGAACCCCTATTTGTTTATTTTTCTAAATACATTCAAAT
AATTGCGCTTAAATTTGTTTATAATTGCAAATGTTAAAGTCCACCGTAAAAGCCCTTTACACGCGCCTTGGGATAAACAATAAAAAGATTTATGTAAGTTTA



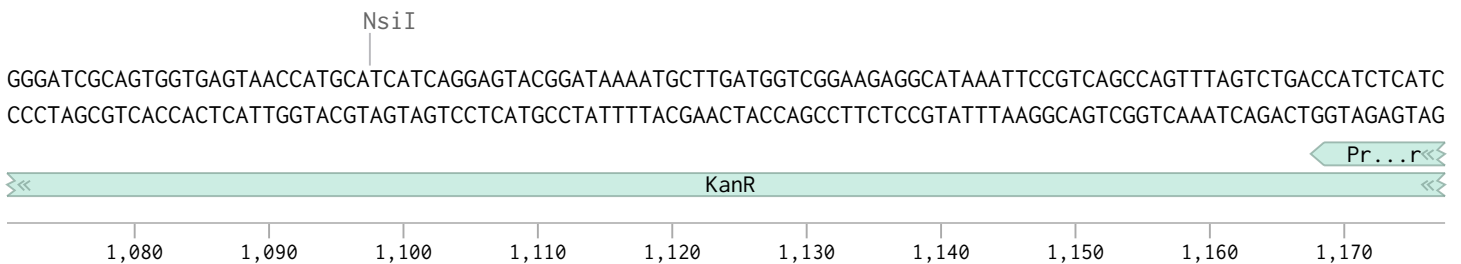
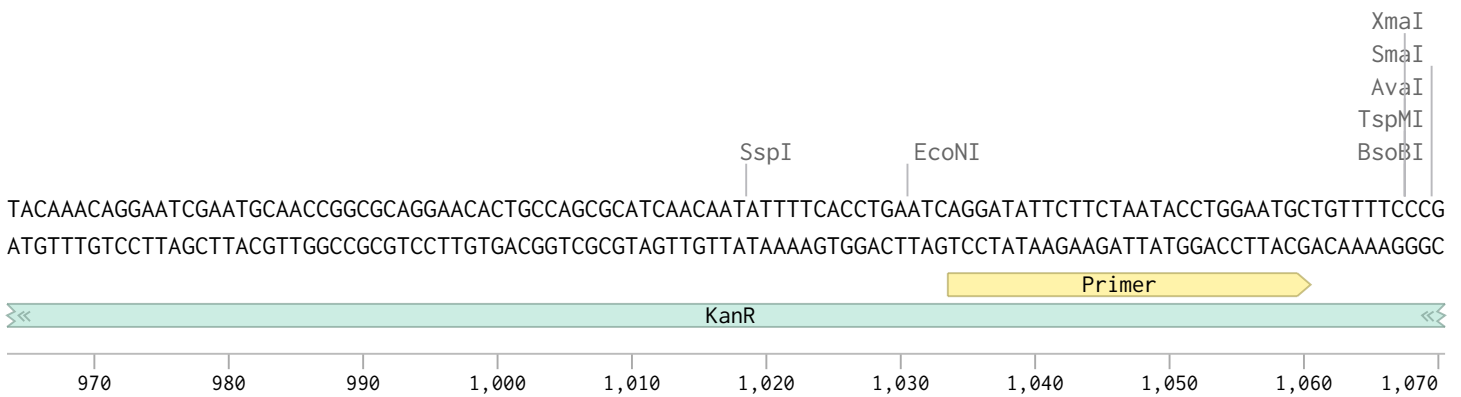
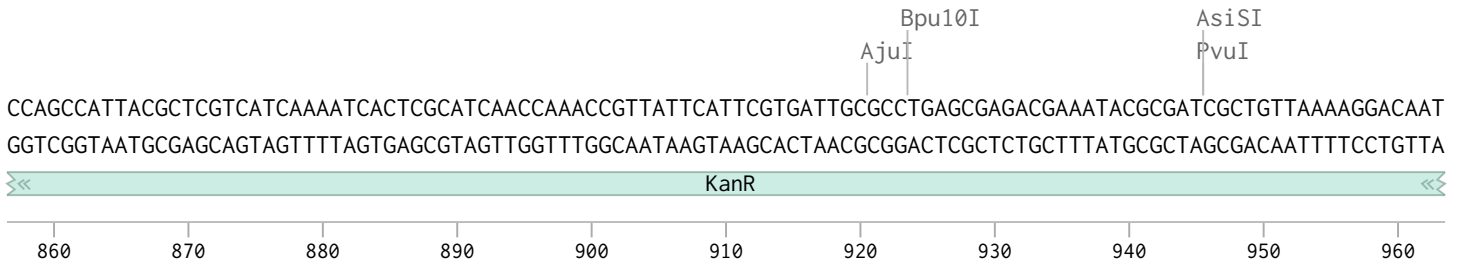
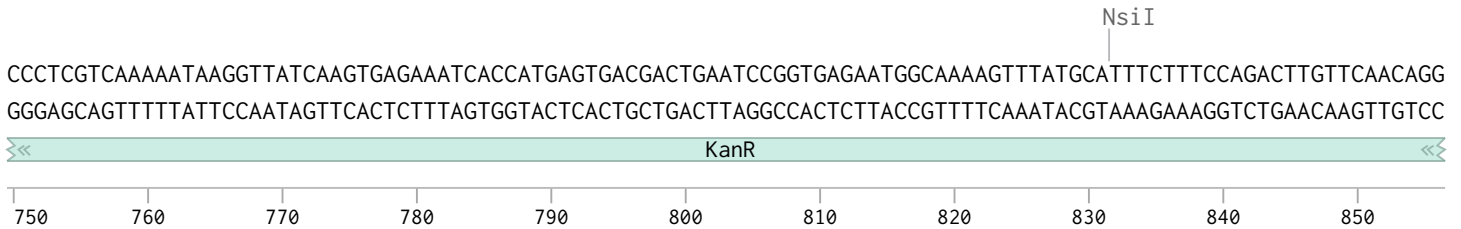
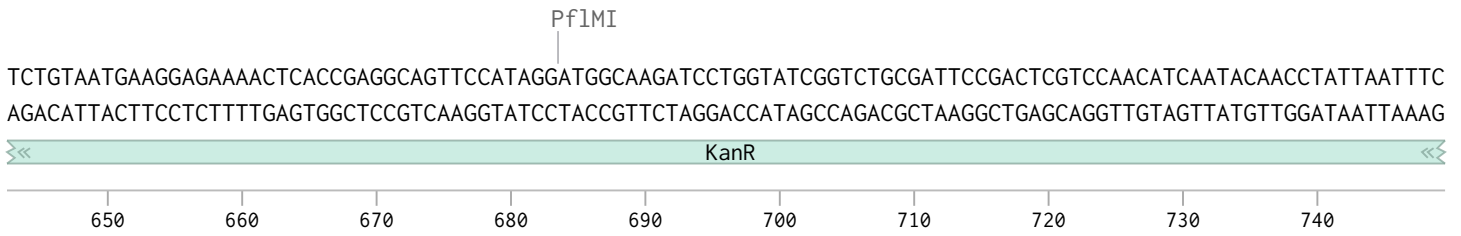
430 440 450 460 470 480 490 500 510 520 530

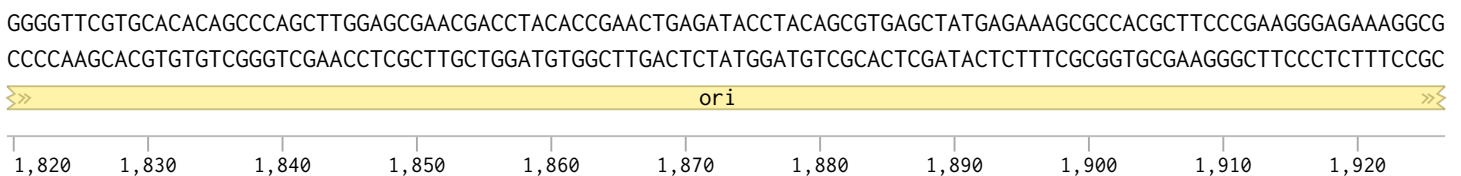
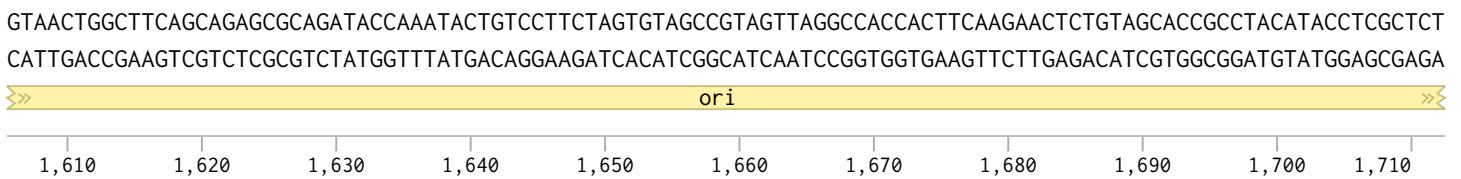
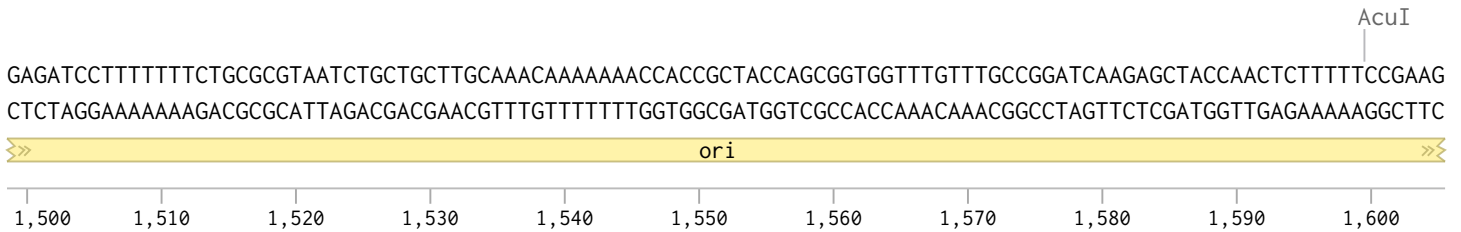
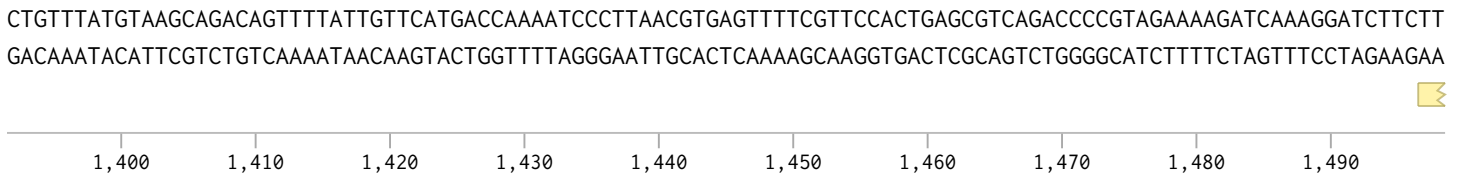
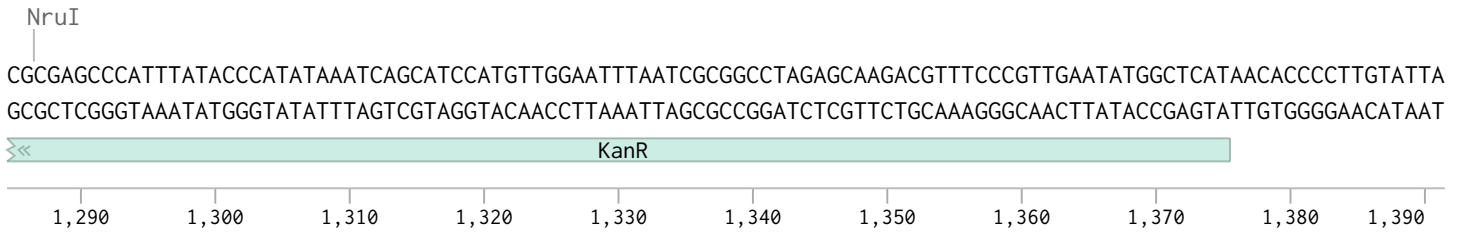
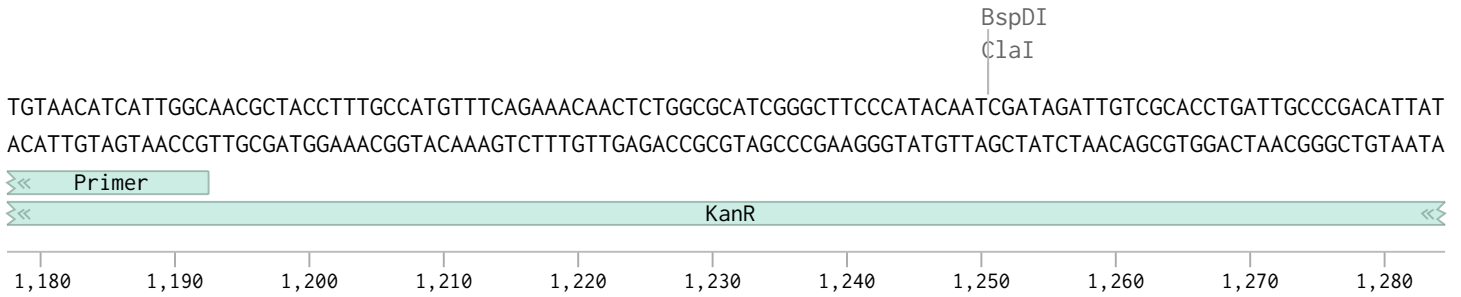


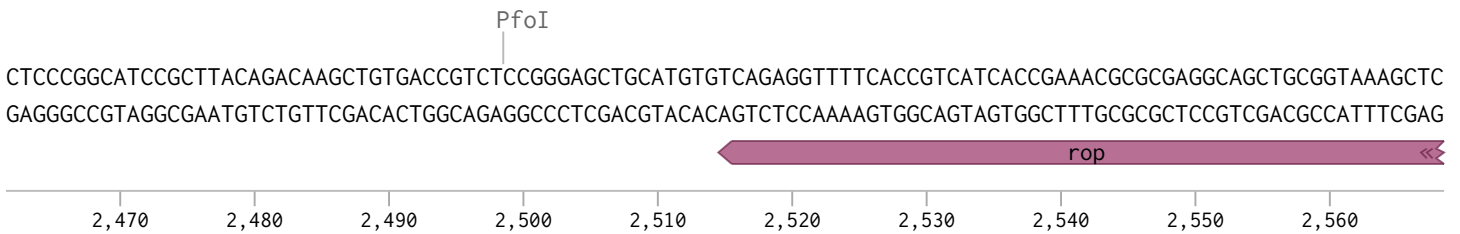
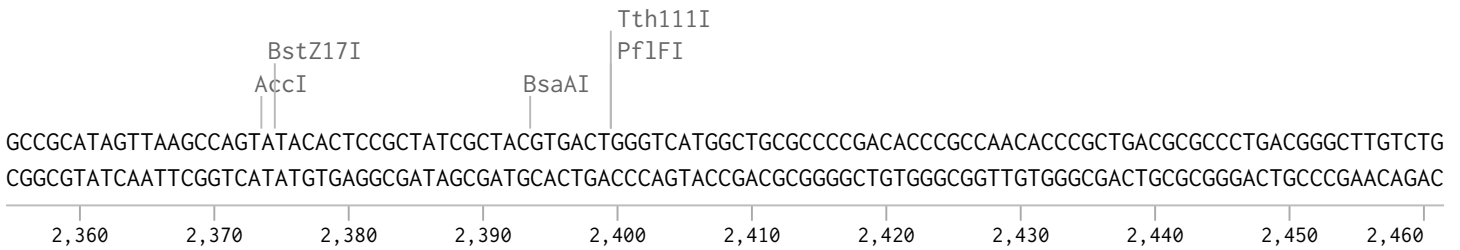
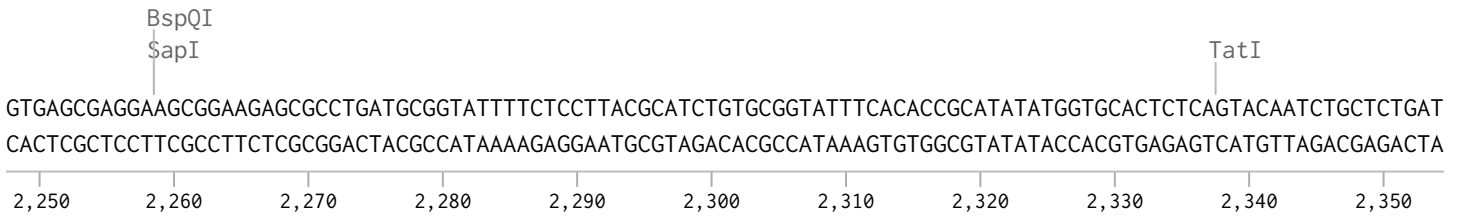
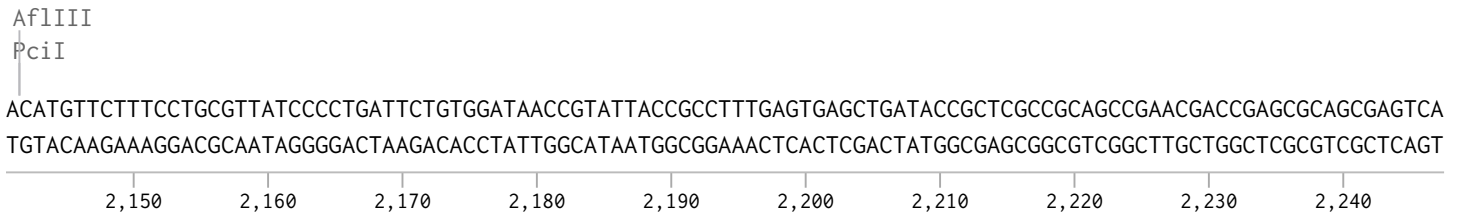
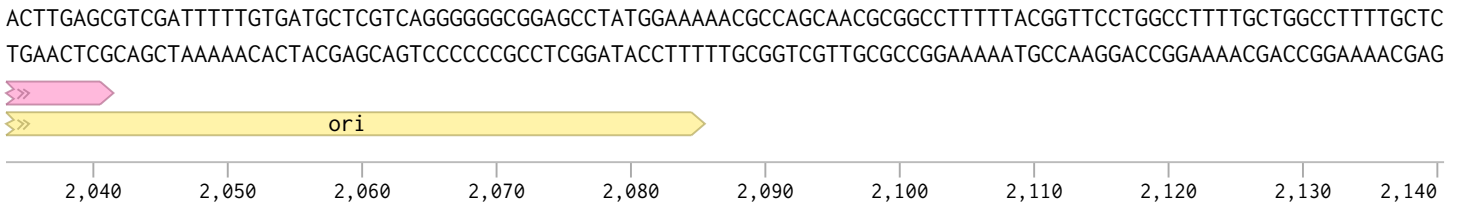
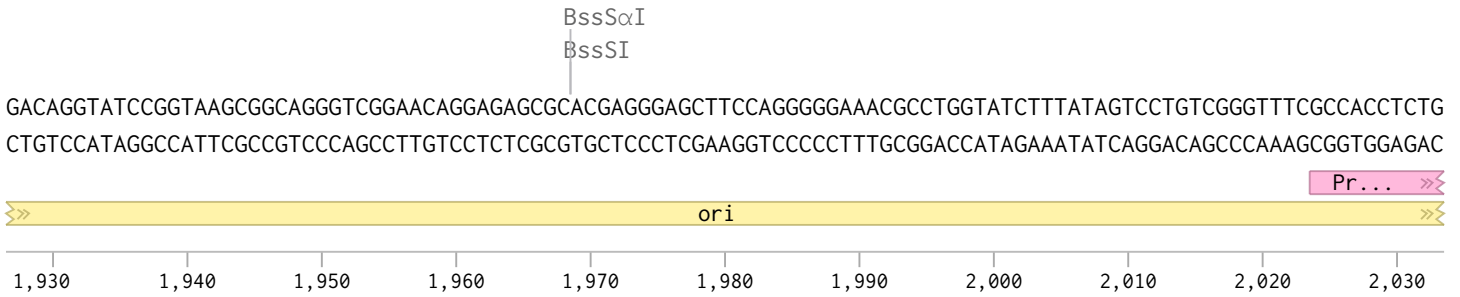
ATGTATCCGCTCATGAATTAATTTCTAGAAAACTCATCGAGCATCAAATGAACTGCAATTTATTCATATCAGGATTATCAATACCATATTTTTGAAAAAGCCGTT
TACATAGCGGAGTACTTAATTAAGAATCTTTTTGAGTAGCTCGTAGTTACTTTGACGTTAAATAAGTATAGTCCTAATAGTTATGGTATAAAAACTTTTTCCGCCAA

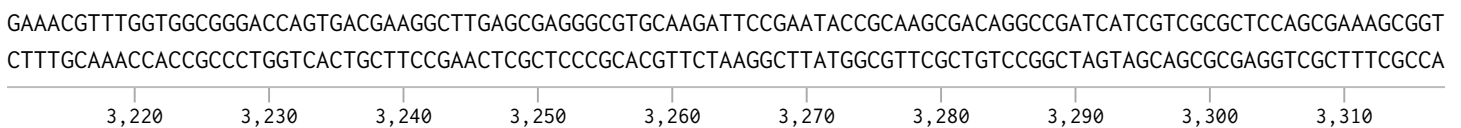
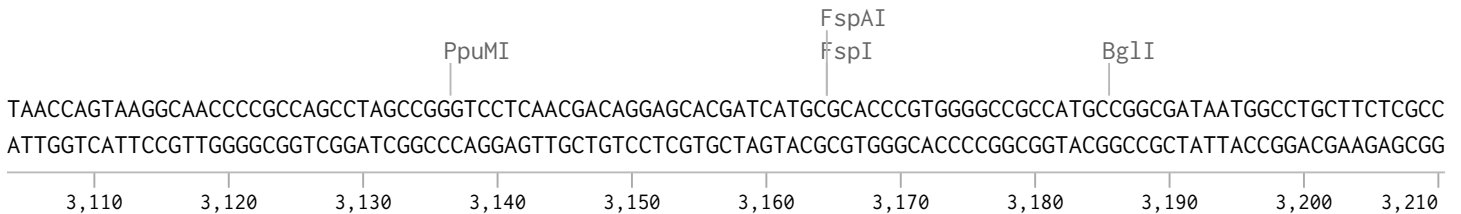
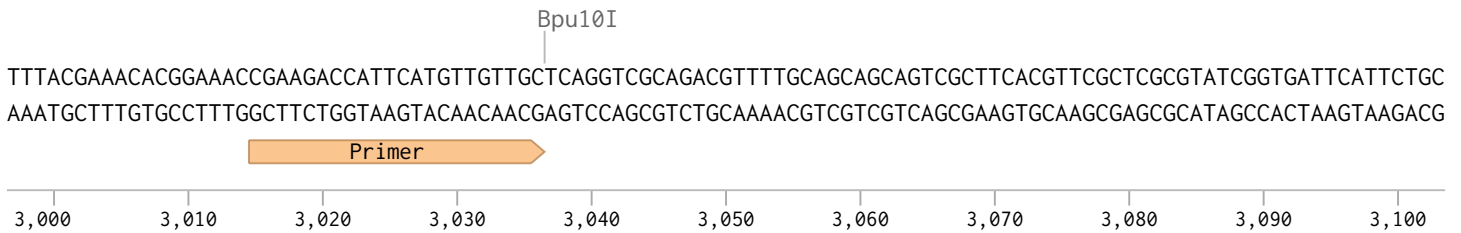
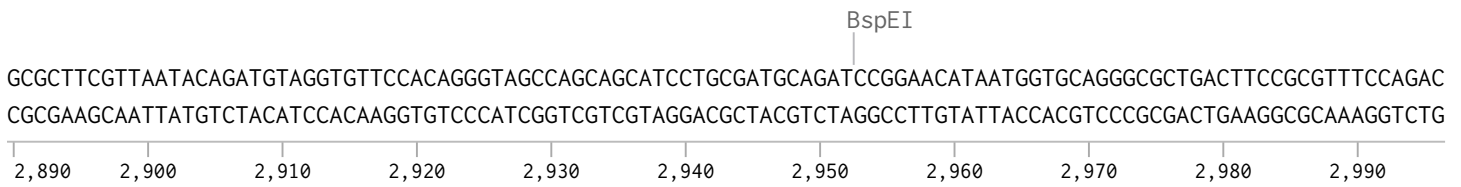
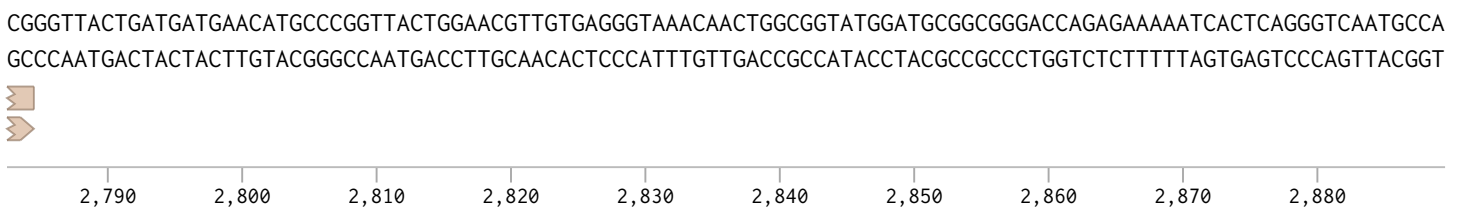
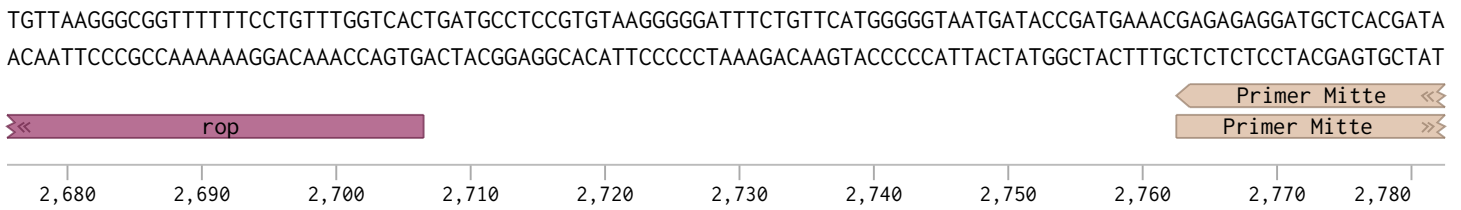
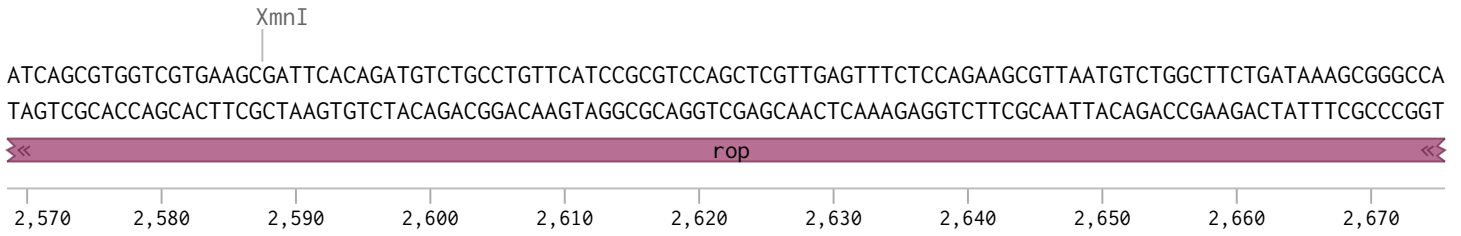


540 550 560 570 580 590 600 610 620 630 640









CCTCGCCGAAAATGACCCAGAGCGCTGCCGGCACCTGTCTACGAGTTGCATGATAAAGAAGACAGTCATAAGTGCGGCGACGATAGTCATGCCCCGCGCCACCGG
 GGAGCGGCTTTACTGGGTCTCGCGACGGCCGTGGACAGGATGCTCAACGTAATTTCTTCTGTCAGTATTCACGCCGCTGCTATCAGTACGGGGCGCGGGTGGCC

3,320 3,330 3,340 3,350 3,360 3,370 3,380 3,390 3,400 3,410 3,420

PshAI

AAGGAGCTGACTGGGTGAAGGCTCTCAAGGGCATCGGTGAGATCCCGTGCCTAATGAGTGAGCTAATTACATTAATTGCGTTGCGCTCACTGCCGCTTTCCA
 TTCCTCGACTGACCAACTCCGAGAGTCCCGTAGCCAGCTCTAGGGCCACGGATTACTCACTCGATTGAATGTAATTAACGCAACGCGAGTGACGGCGAAAGGT

3,430 3,440 3,450 3,460 3,470 3,480 3,490 3,500 3,510 3,520 3,530

lacI

GTCGGAAACCTGTCGTGCCAGCTGCATTAATGAATCGGCCAACGCGGGGAGAGGCGGTTTTCGATTGGGCGCCAGGGTGGTTTTCTTTTACCAGTGAGACG
 CAGCCCTTTGGACAGCACGGTCGACGTAATACTTAGCCGTTGCGCGCCCTCTCCGCCAAACGCATAACCCGCGTCCACCAAAAAGAAAAGTGGTCACTCTGC

3,540 3,550 3,560 3,570 3,580 3,590 3,600 3,610 3,620 3,630

BsaXI

lacI

GGCAACAGCTGATTGCCCTTACCCGCTGGCCCTGAGAGAGTTGCAGCAAGCGGTCCACGCTGGTTTGGCCAGCAGGCGAAAATCCTGTTTGATGGTGGTTAACGG
 CCGTTGTCGACTAACGGGAAGTGGCGGACCGGGACTCTCTCAACGTCGTTCCGACAGTGCACCAACGGGGTCGTCGCTTTTAGGACAAACTACCACCAATTGGC

3,640 3,650 3,660 3,670 3,680 3,690 3,700 3,710 3,720 3,730 3,740

HpaI
HincII

lacI

CGGGATAACATGAGCTGTCTTCGGTATCGTCGTATCCCACTACCGAGATATCCGCACCAACGCGCAGCCCGGACTCGGTAATGGCGCGCATTGCGCCAGCGCCA
 GCCCTATATTGACTCGACAGAAGCCATAGCAGCATAGGGTGATGGCTCTATAGCGTGTTGCGCGTCGGGCTGAGCCATTACCGCGGTAACGCGGGTCGCGGT

3,750 3,760 3,770 3,780 3,790 3,800 3,810 3,820 3,830 3,840 3,850

EcoRV

BssHII

lacI

TCTGATCGTTGGCAACCAGCATCGCAGTGGGAACGATGCCCTCATTACGATTTGCATGGTTTGTGAAAACCGGACATGGCACTCCAGTCGCTTCCGTTCCGCT
 AGACTAGCAACCCTTGGTCGTAGCGTCACCCCTTGTACGGGAGTAAGTCGTAACGTAACCAACAACCTTTGGCCTGTACCGTGAGGTGAGCGGAAGGCAAGGCGA

3,860 3,870 3,880 3,890 3,900 3,910 3,920 3,930 3,940 3,950

lacI

ATCGGCTGAATTTGATTGCGAGTGAGATTTTATGCCAGCCAGCCAGACGCGAGACGCGCCGAGACAGAACTAATGGGCCCGCTAACAGCGCGATTGCTGGTGACC
 TAGCCGACTAAACTAACGCTCACTCTATAAATACGGTCGGTCTGCGTCTGCGCGGCTCTGTCTTGAATTACCCGGGCGATTGTGCGGCTAAACGACCACTGG

3,960 3,970 3,980 3,990 4,000 4,010 4,020 4,030 4,040 4,050 4,060

ApaI
PspOMI NmeAIII BstEII

Primer

lacI

GCCACCATACCCACGCCGAAACAAGCGCTCATGAGCCCGAAGTGGCGAGCCCGATCTTCCCATCGGTGATGTCGGCGATATAGGCCAGCAACCGCACCTGTGGC
CGGTGGTATGGGTGCGGCTTTGTTTCGCGAGTACTCGGGCTTACCAGCTCGGGCTAGAAGGGGTAGCCACTACAGCCGCTATATCCGCGGTCTTTGGCGTGGACACCG

4,820 4,830 4,840 4,850 4,860 4,870 4,880 4,890 4,900 4,910 4,920

SgrAI

BglIII

GCCGGTGATGCCGGCCACGATGCGTCCGCGTAGAGGATCGAGATCTCGATCCCGCAAATTAATACGACTCACTATAGGGGAATTGTGAGCGGATAACAATTCCCC
CGGCCACTACGGCCGGTCTACGCAGGCCGCATCTCCTAGCTCTAGAGCTAGGGCGCTTAATTATGCTGAGTGATATCCCCTAACACTCGCCTATTGTTAAGGGG



4,930 4,940 4,950 4,960 4,970 4,980 4,990 5,000 5,010 5,020

XbaI

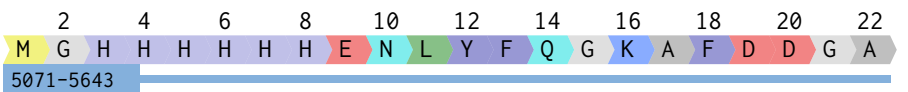
BarI

StyI

NcoI

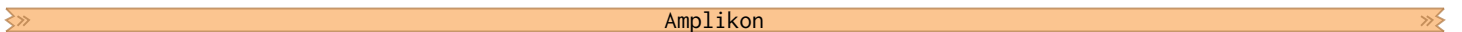
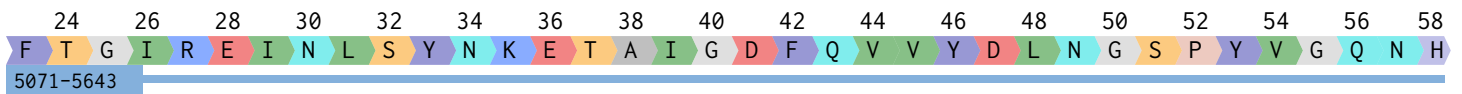
GGCAAAGCGTTTGATGATGG

TCTAGAAATAATTTTGTTTAACTTTAAGAAGGAGATATACCATGGGTATCACCATCATCATCATGAAAACCTGATTTTTCAGGGCAAAGCCTTTGATGATGGCGCC
AGATCTTTATTAACAATAATTGAAATCTTCTCTATATGGTACCAGTAGTGGTAGTAGTACTTTTGGACATAAAAAGTCCCGTTTCGGAACTACTACCGCGG



PsiI
AjuI

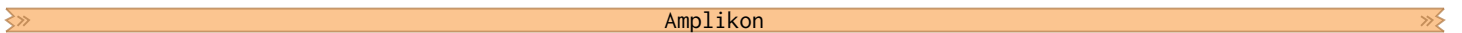
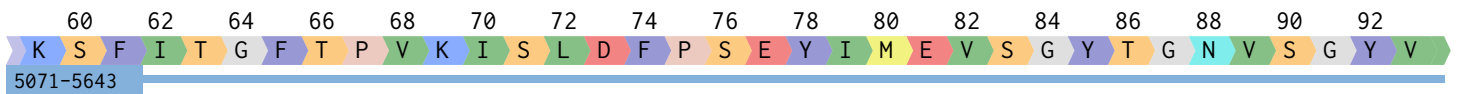
TTCACCGCATTTCGTGAAATTAATCTGAGTTATAATAAAGAAACCGCCATTGGCGATTTTCAGGTGGTGTATGATCTGAACGGCAGCCCGTATGTGGCCAGAATCA
AAGTGGCCGTAAGCACTTTAATTAGACTCAATATTATTTCTTTGGCGTAACCGCTAAAAGTCCACCACATACTAGACTTGCCGTCGGGCATACACCCGGTCTTAGT



5,140 5,150 5,160 5,170 5,180 5,190 5,200 5,210 5,220 5,230 5,240

HindIII AgeI

TAAAAGCTTCATCACCGTTTTACCCCGTGAAATTAGCCTGGATTTTCCGAGCGAATATATTATGGAAGTGAGCGGCTATACCGCAATGTGAGCGGCTATGTGG
ATTTTCGAAGTAGTGGCCAAAATGGGGCCACTTTTAATCGGACCTAAAAGGCTCGCTTATATAATACCTTCACTCGCCGATATGGCCGTTACTCGCCGATAACCC



5,250 5,260 5,270 5,280 5,290 5,300 5,310 5,320 5,330 5,340 5,350

