

How to Biolab data

Do **not store data** on this computer & do **not use USB ports** to connect external storage devices!

But: Use the “zellbio-users” network drive to transfer and store image data.

Protocol to access the zellbio-useres network drive on

1. Measurement Computer

Step 1: Double click the mount button on the desktop.

Step 2: Enter your zedat name in the command line window and press enter.

Step 3: Enter your zedat password in the command line window (you will not see the input) and press enter.

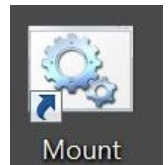
Step 4: Go to “My computer” and find the “zellbio-users” folder (Z:\)

Step 4: Safe your data in “DATA PEOPLE” in your own subfolder.

Step 5: Disconnect network drive by using the unmount button.

Step 6: Transfer your data to your own computer.

You need to register your zedat name with the responsible person of your research group and the facility manager Katharina Achazi.



2. Your own Computer

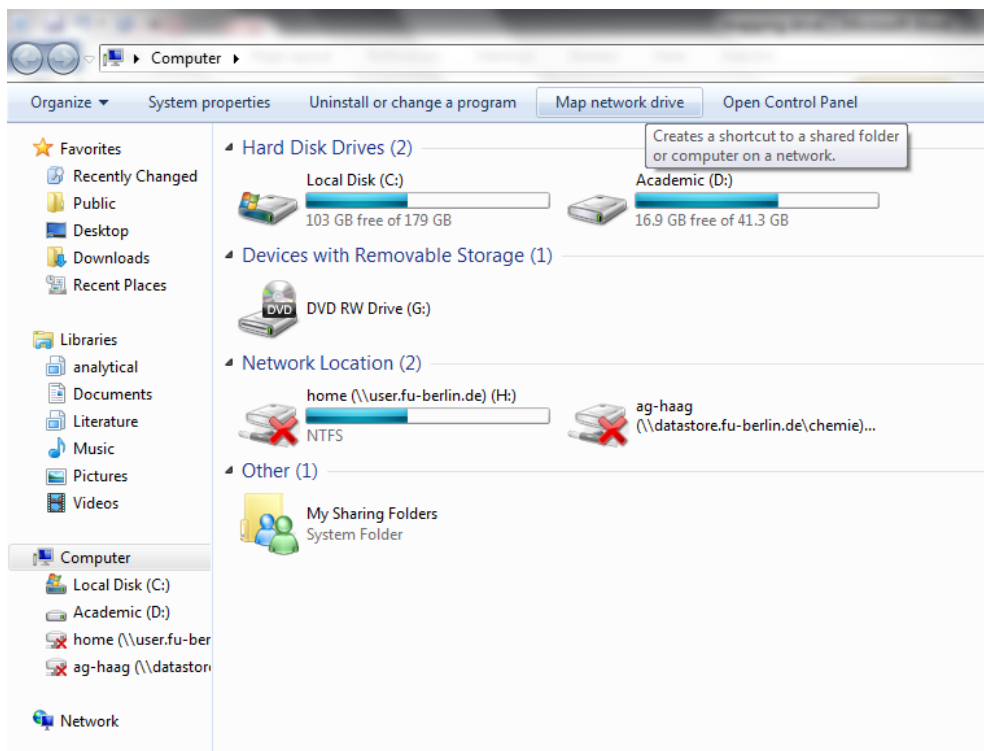
Win → *page 2*

Mac → *page 4*

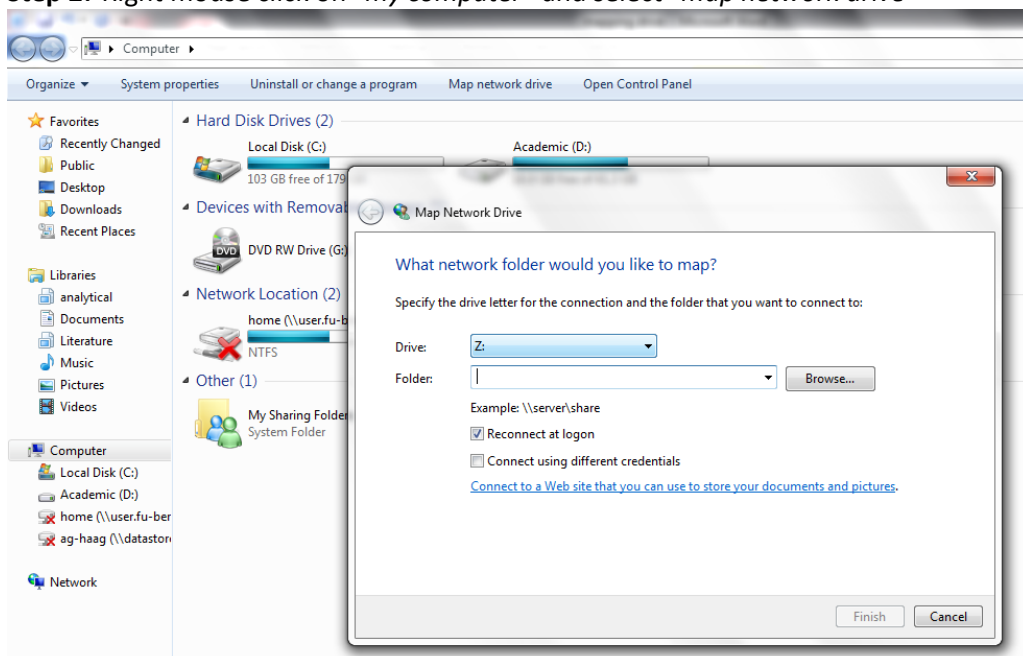
Map group drive (Win):

Ask your IT manager to give you access to the network drive by providing your zedat account name!

Step 1: Go to “my computer”



Step 2: Right mouse click on “my computer” and select “map network drive”



Step 3: Type folder path as

[\\storage.bcp.fu-berlin.de\zellbio-users](https://storage.bcp.fu-berlin.de/zellbio-users)

the path for your personal space you find in the zedat portal in your personal settings

(you have to repeat the whole procedure to map your personal space)

Step 5: Enable “connect using different credentials”
Then “Finish”

Step 6: The system now requires your username and password:
Enter user name: `fu-berlin\“your ZEDAT account name”` (without: `@zedat.fu-berlin.de`)
Password: `“your ZEDAT account password”`

Step 7: Save your data

Step 8: Disconnect network drive right click network drive.

If you are not in University (ZEDAT network) you have to connect your computer before via VPN to the ZEDAT network!

Connect your computer via VPN:

Protocol based on the ZEDAT manual *only available in German:*

https://www.zedat.fu-berlin.de/Tip4U_VPN

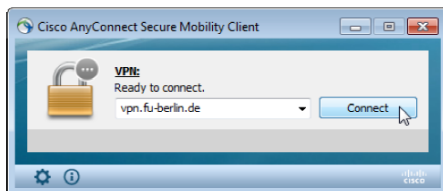
Step 1: Download “Any Connect-Client” (maybe you have to download the Client program in University)

<https://portal.zedat.fu-berlin.de/services/vpn/anyconnect/anyconnect.msi>

(Windows)

<https://portal.zedat.fu-berlin.de/services/vpn/anyconnect/AnyConnect.pkg> (Mac)

Step 2: Start the Cisco AnyConnect Client program

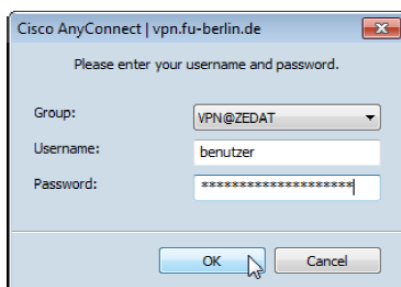


Step 3: Insert “vpn.fu-berlin.de” and “Connect”

Step 4: The system now requires your username and password:

Enter user name: `fu-berlin\“your ZEDAT account name”` (without: `@zedat.fu-berlin.de`)

Password: `“your ZEDAT account password”`



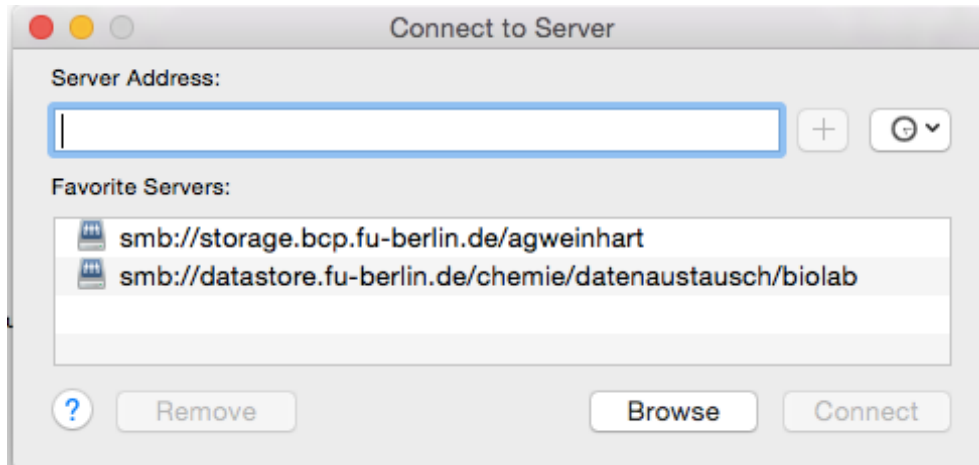
Step 5: Choose “ok” to connect to the ZEDAT network.
You can now start to map your drive and access your data.
Choose “Disconnect” if you want to stop the connection.

Map group drive (Mac):

Ask your IT manager to give you access to the network drive by providing your zedat account name!

Step 1: Go to “Finder”

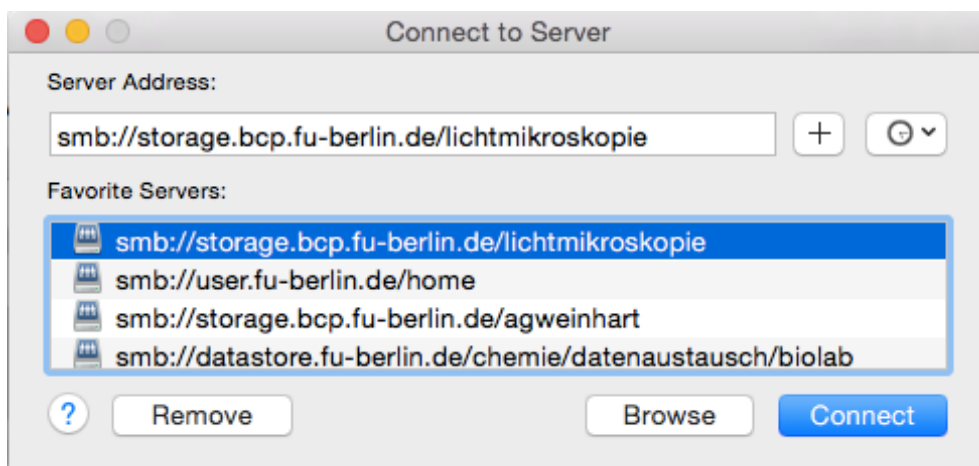
Step 2: Select “Go” > “Connect To Server” (Cmd + K) to open the “Connect to Server” window.



Step 3: Type folder path as

smb://storage.bcp.fu-berlin.de/zellbio-users

the path for your personal space you find in the zedat portal in your personal settings



Step 4: Select “+” and “Connect”

Step 5: The system now requires your username and password:

Enter user name: `fu-berlin.de\your ZEDAT account name` (without: `@zedat.fu-berlin.de`)

Password: `“your ZEDAT account password”`

Step 6: Save your data

Step 7: Disconnect network drive.

If you are not in University (ZEDAT network) you have to connect your computer before via VPN to the ZEDAT network!

Connect your computer via VPN:

Protocol based on the ZEDAT manual *only available in German*:

https://www.zedat.fu-berlin.de/Tip4U_VPN

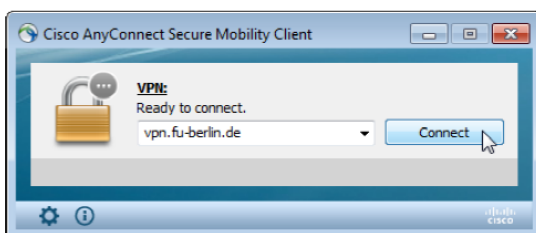
Step 1: Download “Any Connect-Client” (*maybe you have to download the Client program in University*)

<https://portal.zedat.fu-berlin.de/services/vpn/anyconnect/anyconnect.msi>

(Windows)

<https://portal.zedat.fu-berlin.de/services/vpn/anyconnect/AnyConnect.pkg> (Mac)

Step 2: Start the Cisco AnyConnect Client program

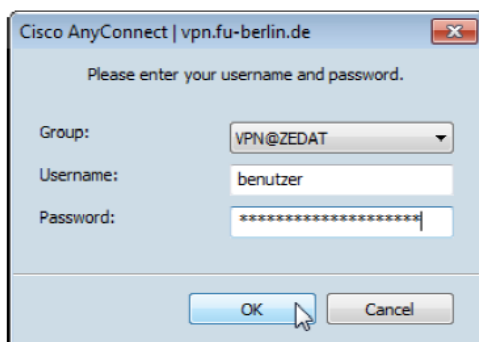


Step 3: Insert “vpn.fu-berlin.de” and “Connect”

Step 4: The system now requires your username and password:

Enter user name: `fu-berlin\“your ZEDAT account name”` (without: `@zedat.fu-berlin.de`)

Password: *“your ZEDAT account password”*



Step 5: Choose “ok” to connect to the ZEDAT network.

You can now start to map your drive and access your data.

Choose “Disconnect” if you want to stop the connection.