

# **An all-in-one, Tet-On 3G inducible PiggyBac system for human pluripotent stem cells and derivatives**

**Lauren N. Randolph<sup>1,3,#</sup>, Xiaoping Bao<sup>4,#</sup>, Chikai Zhou<sup>5</sup>, Xiaojun Lian<sup>1,2,3,\*</sup>**

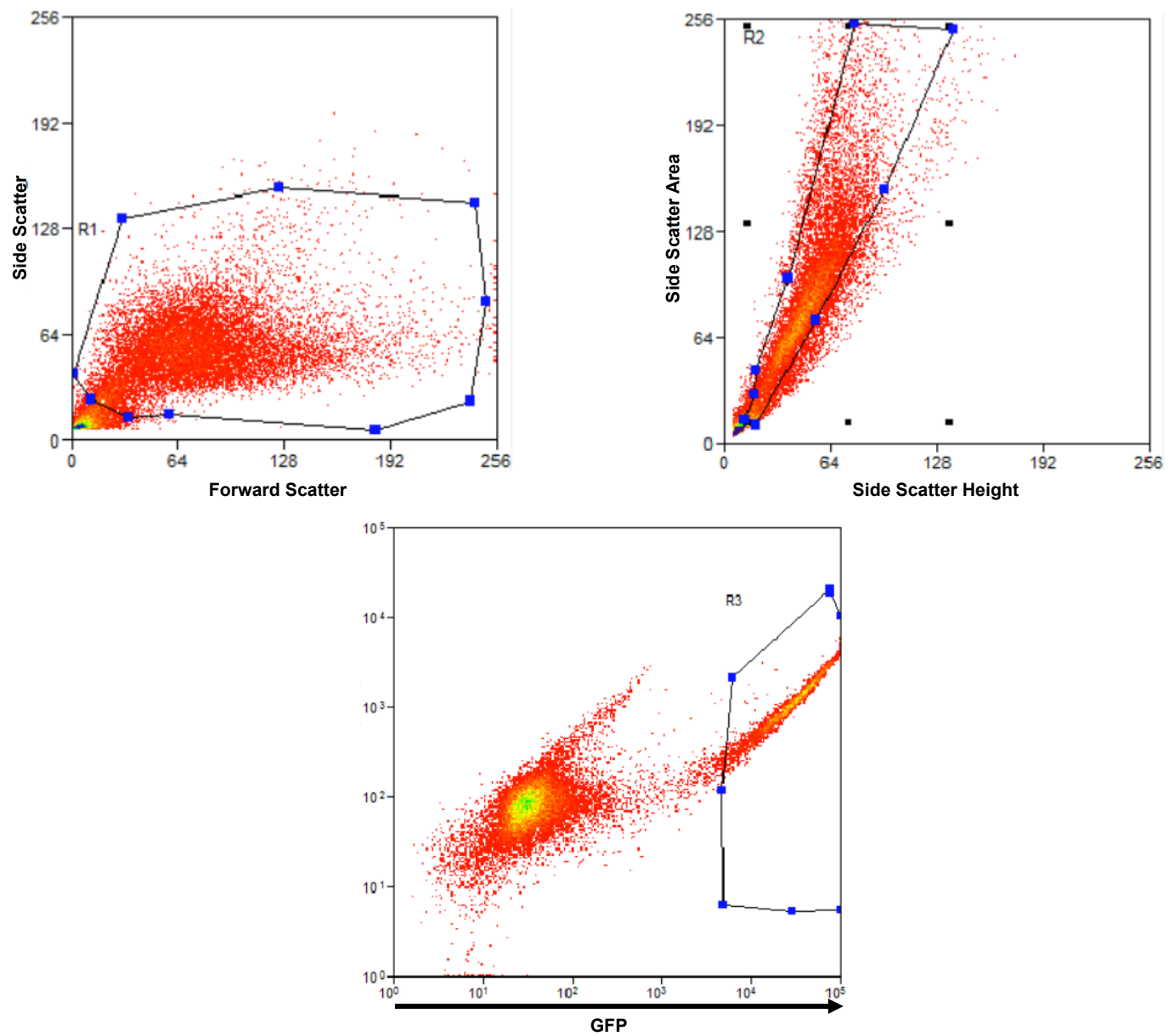
<sup>1</sup>Department of Biomedical Engineering, <sup>2</sup>Department of Biology, <sup>3</sup>The Huck Institutes of the Life Sciences, Pennsylvania State University, University Park, PA, 16802, USA

<sup>4</sup>Department of Chemical and Biological Engineering, University of Wisconsin, Madison, WI, 53706, USA

<sup>5</sup>Department of Cell and Molecular Biology, Karolinska Institutet, 17177, Stockholm, Sweden

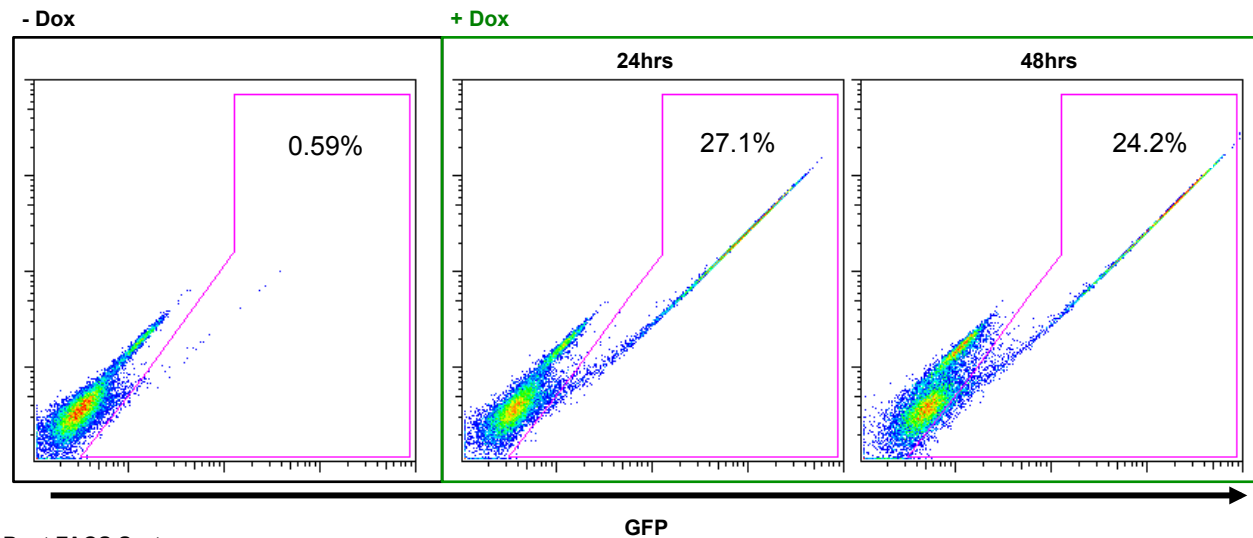
\* Correspondence should be addressed to: Xiaojun Lian ([Lian@psu.edu](mailto:Lian@psu.edu))

# These authors contributed equally to this work.

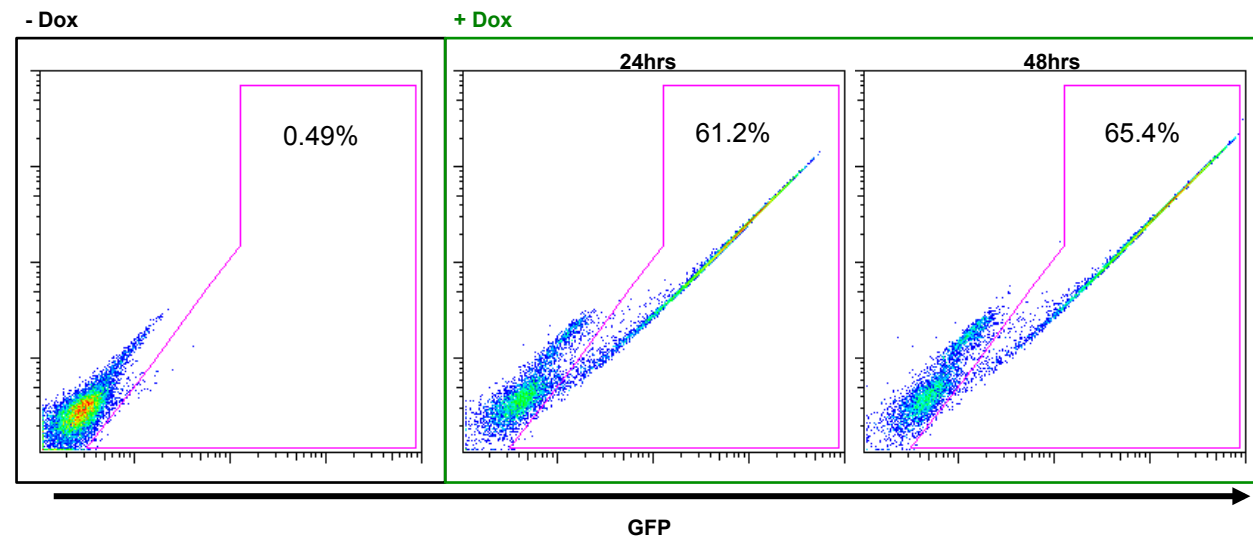


**Supp. Fig. 1:** FACS sort gating for population with highest GFP expression (R3).

**A** Post 2<sup>nd</sup> Bsd Selection



**B** Post FACS Sort



**Supp. Fig. 2:** Comparison of GFP expression at 24 and 48 hours in cells after A) two rounds of Bsd selection and B) FACS sorting.

<b>Antibody</b>	<b>Source</b>	<b>Application</b>
Oct3/4	Santa Cruz, mouse IgG <sub>2b</sub> , Clone: C-10, sc-5279	1:100 (IS)
Nanog	Thermo Fisher Scientific, rabbit IgG, PA1-097	1:500 (IS)
cTnT	Lab Vision, mouse IgG1, Clone: 13-11, ms: 295-p1	1:200 (IS)
SSEA-4	DSHB, mouse IgG3, MC-813-70	1:20 (IS)
cTnI	Santa Cruz, rabbit IgG, sc-15368/H-170	1:100 (IS)
Nkx2.5	Santa Cruz, rabbit IgG, sc-14033/H-114	1:75 (IS)
Secondary Antibody	Alexa 555 Goat anti Rb IgG, A-21428	1:1000
Secondary Antibody	Alexa 647 Goat anti Rb IgG, A-21244	1:1000
Secondary Antibody	Alexa 647 Goat anti Ms IgG, A-21235	1:1000

**Supp. Table 1:** Antibodies used in immunostaining analysis.