

Volume Viewer: Custom Review Creation

VolumeShare 7 • Quick Reference Guide

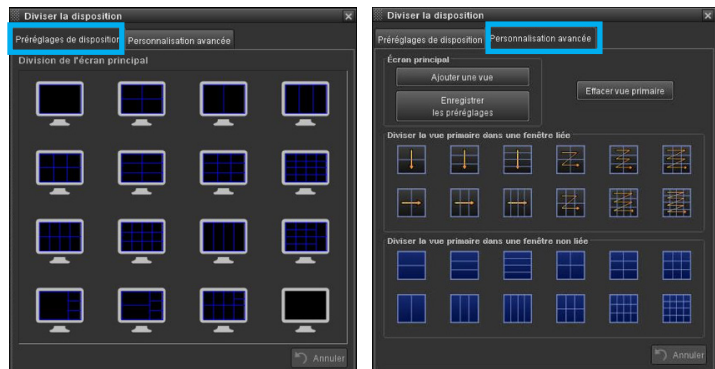
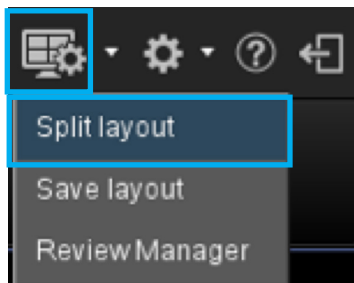
Volume Viewer provides visualization and processing capabilities for reading and comparing CT, MR, 3D X-ray, PET, and PET/CT datasets. Volume Viewer 3D image review protocols can be customized and saved to better fit your needs.

- Select a standard exam to use as a template, and load it in **Oncology Review** for an oncology study, or in **VV General Review** for any other study.
- Select series to load and click on **OK**.



Exam			
	Modality	Series	Desc
<input checked="" type="checkbox"/>	CT	2	Abdo
<input checked="" type="checkbox"/>	CT	3	Multiph
<input checked="" type="checkbox"/>	CT	3	Multiph
<input type="checkbox"/>	CT	4	Arterial F

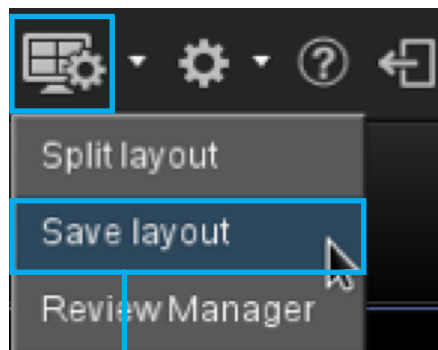
- Select desired layout using **Split Layout**



Preset layout or customized layout

- In each viewport, select
 - Volume to display
 - Windowing
 - Slice thickness
 - Rendering Mode (Ave, MIP, MinIP, VR)
 - View Type (3D, VR, Curved, Nav)

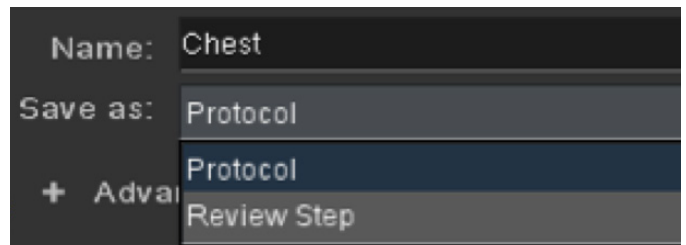
THEN Save the new protocol/review step by selecting **Save layout**.



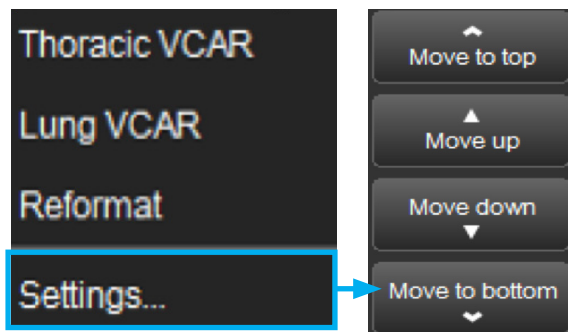
- Select protocol's Anatomy
- Name the protocol
- Advanced Mode: Check each viewport's parameters that need to be saved.



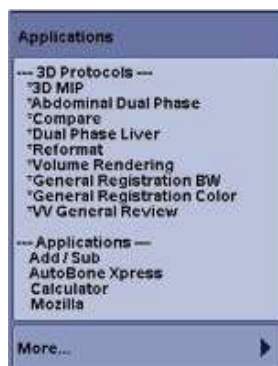
- Choose to save as **Protocol** or as **Review Step** that will appear in the current protocol. Then click **Save**.



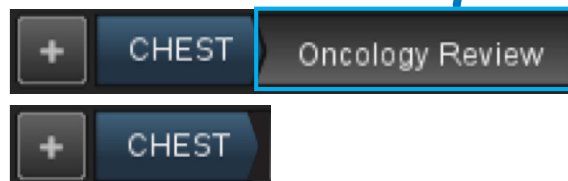
- **On AW Server**, log out and log back in for the new protocol to appear in applications list.
- **On AW Server**: To set the protocol position in the list, click on **Settings** and move the review to desired location.



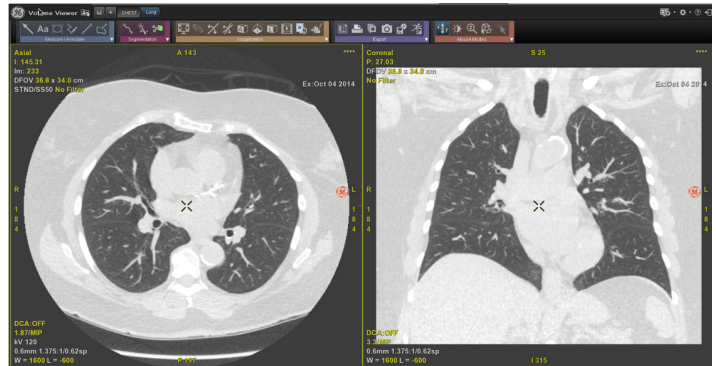
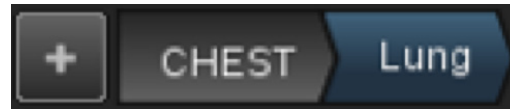
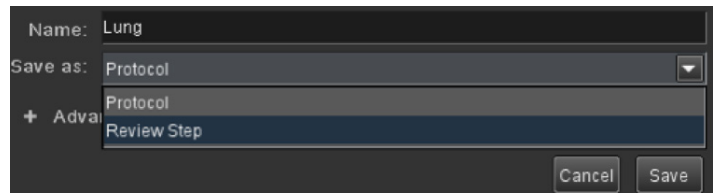
- **On AW**, the new protocol will automatically be marked as a favorite protocol, and will appear in the applications list on the left of the patient's worklist. The order of appearance is set automatically.



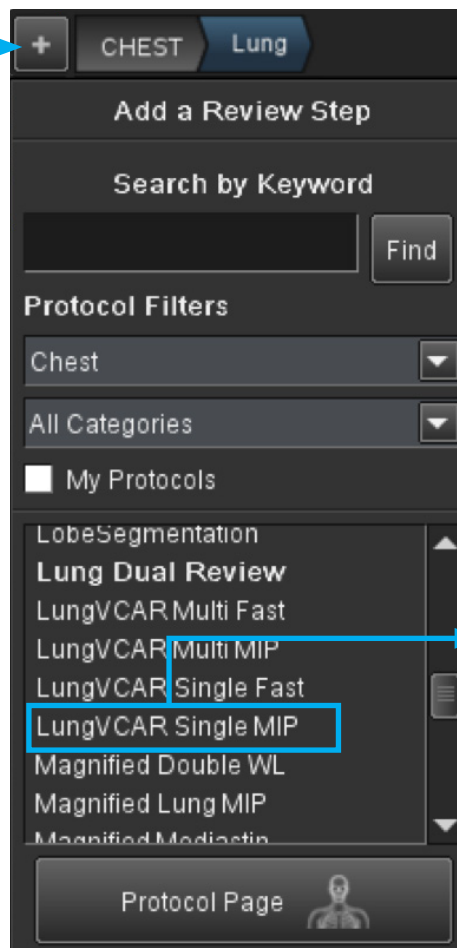
- To remove the original/unwanted review step, drag and drop outside of the review step bar, after exiting the newly created protocol and loading images back in again.



- To create new review steps within the current protocol, follow previous instructions and select **Review Step**. Then click **Save**.
- The new review step will appear in the review steps bar.

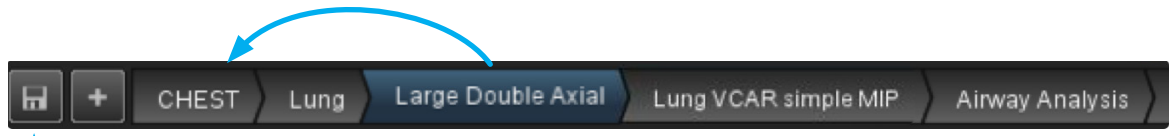


- To add a review step, click on +



- Select the step to add and drag and drop it to the steps bar.

- Drag and drop steps to desired order



- Save that new order using the  icon

WARNING! To assure an efficient and safe use of Volume Viewer Apps, it is essential for you to read the User Guides and the Customer Release Notes before attempting to start. The entire documentation is available on your system. Make certain that your documentation is readily available at all times. You shall under no circumstances use Volume Viewer Apps if the documentation is not available. If you need help, please contact the Online Center.

GE, and the GE Monogram are trademarks of the General Electric Company.